

STOREFRONT AT MAIN ENTRY

STANDING SEAM METAL AT UPPER LEVEL

2 FRONT ELEVATION - ALABAMA
 $\frac{1}{16}'' = 1'-0''$



HEIGHT TAKEN FROM MID POINT OF BUILDING ALONG ALABAMA AVENUE, FROM PROPOSED GRADE (LOWER THAN EXISTING) TO TOP OF ROOF. n.i. PARAPET

WESTCHESTER BRICK BANDING - DOUBLE SOLDIER COURSE

QUORUM BRICK

WESTCHESTER BRICK AT BASE - TYPICAL

PAINTED FCB PANELS AT UPPER LEVEL

PAINTED FCB PANELS AND TRIM AT STAIRS AND AT WINDOW INFILL

1 ELEVATION AT 16' ALLEY
 $\frac{1}{16}'' = 1'-0''$



WESTCHESTER BRICK BANDING - DOUBLE SOLDIER COURSE

WESTCHESTER BRICK AT BASE - TYPICAL

PATTERNED, SMOOTH CAST IN PLACE CONCRETE STEPS

QUORUM BRICK

LOW CELLAR LEVEL AT RUBBISH/ BIKES



ARCHITECTURE
301 Boulder St, #333
Minturn CO 81645

Durrani Development
1775 Tysons Boulevard, 5th flr
Tysons, Virginia 22101

PROJECT
Alabama Ave SE
Washington DC 20020
PROJECT NO.
19_DUmf-0001

ISSUE
19 June 2019
RELEASE
BZA Application

BUILDING
ELEVATIONS

Board of Zoning Adjustment
District of Columbia
CASE NO.20110
EXHIBIT NO.548
pg. 12

2 NORTH ELEVATION

$\frac{1}{16}'' = 1'-0''$



301 Boulder St, #338
Minturn CO 81645

STANDING SEAM METAL AT UPPER LEVEL



PAINTED METAL TRIM AT LAP SIDING

LAP SIDING WITH 8" EXPOSURE, PTD SIM. TO QUORUM BRICK

QUORUM BRICK

WESTCHESTER BRICK AT BASE - TYPICAL

PAINTED FCB PANELS AT UPPER LEVEL

VTAC VENTS

1 SOUTH ELEVATION

$\frac{1}{16}'' = 1'-0''$



Durrani Development
1775 Tysons Boulevard, Suite 110
Tysons, Virginia 22101

PROJECT
Alabama Ave SE
Washington DC 20020
PROJECT NO.
19_DUmF-0001

ISSUE
19 June 2019
RELEASE
BZA Application

WESTCHESTER BRICK BANDING - DOUBLE SOLDIER COURSE

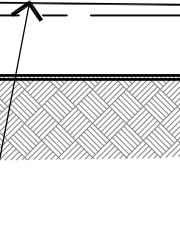
QUORUM BRICK

WESTCHESTER BRICK AT BASE - TYPICAL



BUILDING
ELEVATIONS

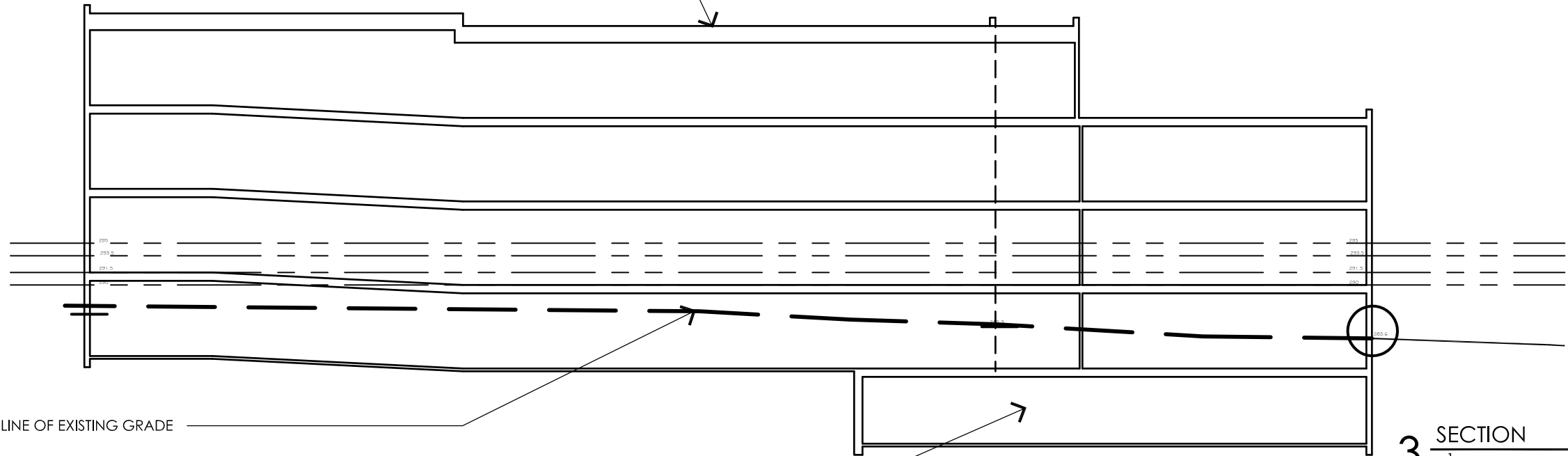
pg.13



/



'FLAT' ROOF. NON VENTED WITH RIGID TAPERED INSULATION DRAIN TO SCUPPERS AND LEADERS



LINE OF EXISTING GRADE

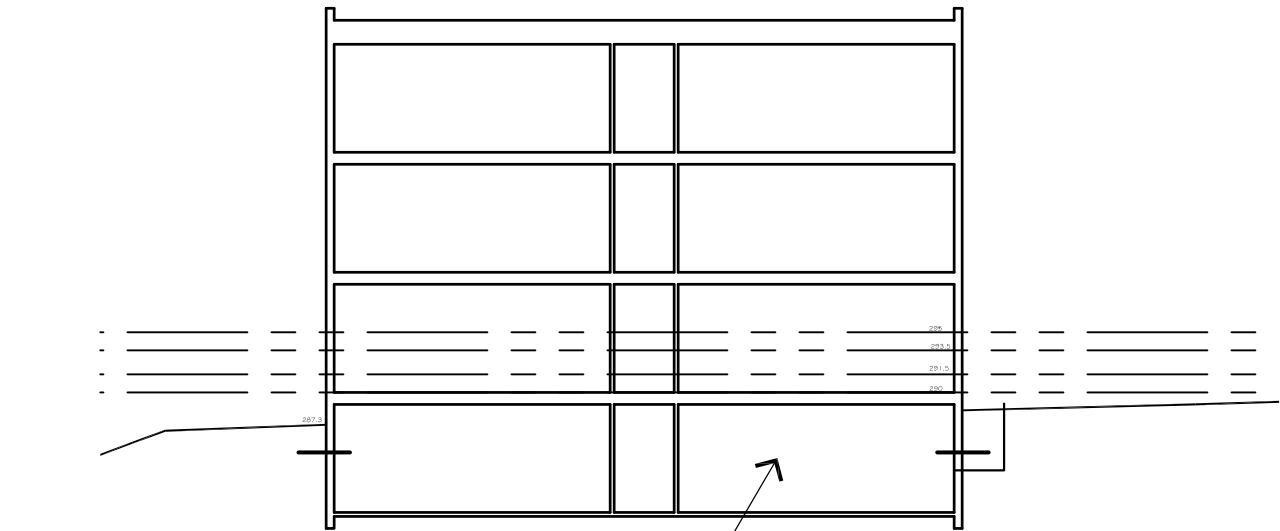
LOW CELLAR LEVEL AT RUBBISH/ BIKES



Durrani Development
1775 Tysons Boulevard, 5th flr
Tysons, Virginia 22101

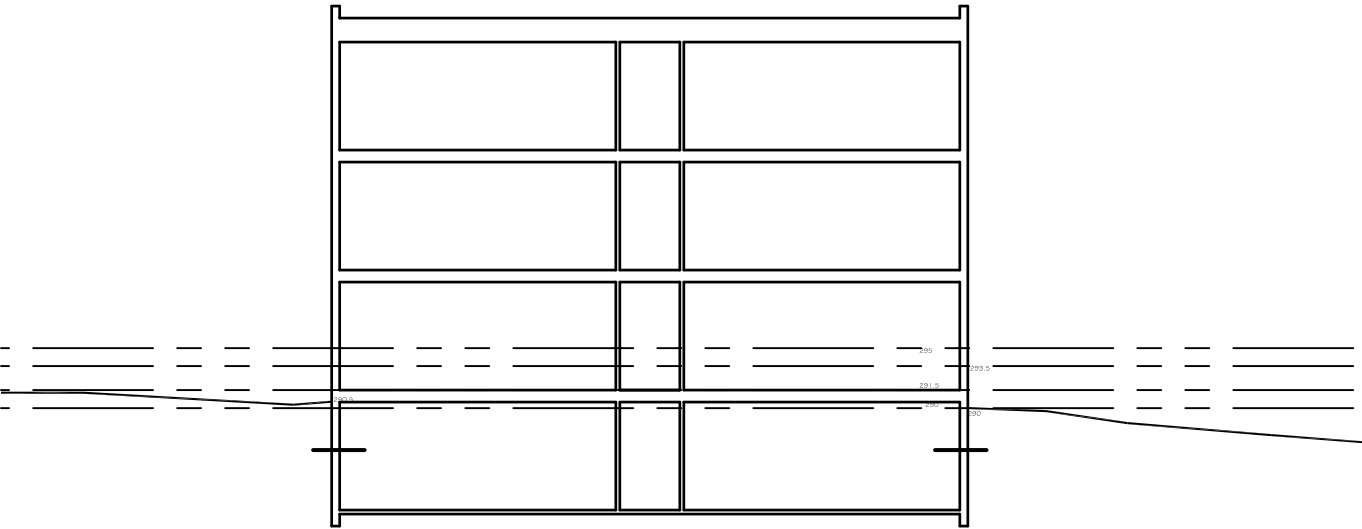
PROJECT
Alabama Ave SE
Washington DC 20020
PROJECT NO.
19_DUmf-0001

ISSUE
19 June 2019
RELEASE
BZA Application



CELLAR LEVEL

2 SECTION
 $\frac{1}{16}'' = 1'-0''$



1 SECTION
 $\frac{1}{16}'' = 1'-0''$

STANDING SEAM METAL AT UPPER LEVEL
VTAC VENTS

PAINTED FCB PANELS AND TRIM AT WINDOW INFILL

PAINTED FCB PANELS AT UPPER LEVEL

BONZETONE VINYL WINDOWS , CASEMENT AND SLIDER

WESTCHESTER BRICK BANDING - DOUBLE SOLDIER COURSE
WESTCHESTER BRICK AT BASE - TYPICAL

QUORUM BRICK

CONCRETE AREAWELLS AT CELLAR LEVEL WINDOWS FOR EGRESS

REDUCE GRADE TO 5' BELOW MAIN LEVEL FLOOR WHERE POSSIBLE

1 FRONT ELEVATION - ALABAMA
 $\frac{1}{8}" = 1'-0"$



GPS
DESIGNS
ARCHITECTURE
301 Boulder St, #333
Minturn CO 81645

Durrani Development
1775 Tysons Boulevard, 5th flr
Tysons, Virginia 22101

PROJECT
Alabama Ave SE
Washington DC 20020
PROJECT NO.
19_DUmF-0001

ISSUE
19 June 2019
RELEASE
BZA Application

BUILDING
ELEVATIONS

pg.16

PAINTED FCB PANELS AT UPPER LEVEL
VTAC VENTS
PAINTED FCB PANELS AND TRIM AT WINDOW INFILL
ALUMINUM STOREFRONT SYSTEM AT ENTRY SPACE W/ PTD FCB TRIM TO MATCH
PAINTED METAL CORNICE
STANDING SEAM METAL AT UPPER LEVEL
BONZETONE VINYL WINDOWS , CASEMENT AND SLIDER

1 FRONT ELEVATION - ALABAMA
 $\frac{1}{8}" = 1'-0"$



GPS
DESIGNS
ARCHITECTURE
301 Boulder St, #333
Minturn CO 81645



WESTCHESTER BRICK BANDING - DOUBLE SOLDIER COURSE
WESTCHESTER BRICK AT BASE - TYPICAL
QUORUM BRICK
CONCRETE ENTRY STAIR
1:12 CONCRETE RAMP WITH METAL GUARD/RAIL FOR ACCESSIBILITY

Durrani Development
1775 Tysons Boulevard, 5th flr
Tysons, Virginia 22101

PROJECT
Alabama Ave SE
Washington DC 20020
PROJECT NO.
19_DUmf-0001

ISSUE
19 June 2019
RELEASE
BZA Application



STANDING SEAM METAL AT UPPER LEVEL

VTAC VENTS

PAINTED METAL TRIM AT LAP SIDING

PAINTED FCB PANELS AND TRIM AT WINDOW INFILL

BONZETONE VINYL WINDOWS, SLIDER

PAINTED FCB PANELS AT UPPER LEVEL

WESTCHESTER BRICK BANDING - DOUBLE SOLDIER COURSE

WESTCHESTER BRICK AT BASE - TYPICAL

QUORUM BRICK

CONCRETE AREAWELLS AT CELLAR LEVEL WINDOWS FOR EGRESS

REDUCE GRADE TO 5' BELOW MAIN LEVEL FLOOR WHERE POSSIBLE

LAP SIDING WITH 8" EXPOSURE, PTD SIM. TO QUORUM BRICK

1 SIDE ELEVATION - SOUTH

$\frac{1}{8}'' = 1'-0''$



Durrani Development
1775 Tysons Boulevard, 5th flr
Tysons, Virginia 22101

PROJECT
Alabama Ave SE
Washington DC 20020
PROJECT NO.
19_DUmf-0001

ISSUE
19 June 2019
RELEASE
BZA Application



1 COURTYARD ELEVATION
1/8" = 1'-0"



Durrani Development
1775 Tysons Boulevard, 5th flr
Tysons, Virginia 22101

PROJECT
Alabama Ave SE
Washington DC 20020
PROJECT NO.
19_DUmF-0001

ISSUE
19 June 2019
RELEASE
BZA Application

LINE OF SECTION AT FLANKING STRUCTURE ON COURTYARD

VTAC VENTS

PAINTED FCB PANELS AND TRIM AT WINDOW INFILL

QUORUM BRICK

PAINTED METAL CORNICE

STANDING SEAM METAL AT UPPER LEVEL

LAP SIDING WITH 8" EXPOSURE, PTD SIM. TO QUORUM BRICK

WESTCHESTER BRICK BANDING - DOUBLE SOLDIER COURSE

WESTCHESTER BRICK AT BASE - TYPICAL

CONCRETE AREAWELLS AT CELLAR LEVEL WINDOWS FOR EGRESS

SECTION ALONG 1:12 RAMP AT COURTYARD ENTRANCE

1 COURTYARD ELEVATION
 $\frac{1}{8}" = 1'-0"$



Durrani Development
1775 Tysons Boulevard, 5th flr
Tysons, Virginia 22101

PROJECT
Alabama Ave SE
Washington DC 20020
PROJECT NO.
19_DUmF-0001

ISSUE
19 June 2019
RELEASE
BZA Application

BUILDING
ELEVATIONS

pg.20



2 VIEW TO LOW CELLAR FROM 16' ALLEY
N.T.S.



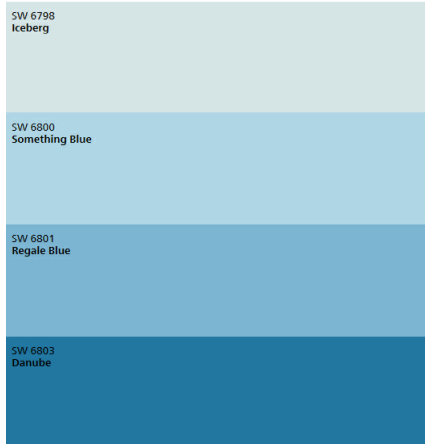
1 VIEW INTO COURTYARD
N.T.S.



2 VIEW TO ENTRY FROM ALABAMA
N.T.S.

1 VIEW FROM ALABAMA
N.T.S.





PAINTED 12x48/60/72 FCB PANELS
TILED TO "DISOLVE" UP TO SKY



ACME BRICK - QUORUM



ACME BRICK - WESTCHESTER
(DARKER GROUT THAN SHOWN)



LAP SIDING - COLOR SIM. BRICK



GREY STANDING SEAM



2019 GPS Designs LLC